



TEREX

TH636C

Telehandler

OPERATING WEIGHT	21,080 lbs (9,562 kg)
NET ENGINE POWER	99 hp (73.8 kW)
MAXIMUM LIFT CAPACITY	6,000 lbs (2,722 kg)
MAXIMUM LIFT HEIGHT	36' (11.0 m)



TELEHANDLER TH636C

Specifications

Performance

Operating weight with forks	21,080 lbs (9,562 kg)
Inside/outside turn radius	4' 5" / 12' 11" (1.35 / 3.94 m)
Maximum lifting height	36' (11.0 m)
Reach at maximum height	30" (0.76m)
Maximum forward reach	21' (6.4 m)
Maximum lift capacity	6,000 lbs (2,722 kg)
Payload at maximum height	6,000 lbs (2,722 kg)
Payload at maximum reach	2,000 lbs (905 kg)

Steering

Power assisted steering

Three steering modes: 2-wheel, 4-wheel coordinated, and 4-wheel crab

Engine

John Deere 4045T	
4 cylinders turbocharged diesel	
Power @ 2,500 rpm	Std. 99 hp (73.8 kW)
Tier II Compliant	

Transmission

3 Speed Powershift/Torque Converter	
4 wheel drive	
Front axle differential lock	
Maximum speed	17.2 mph (27.7 km/h)

Brakes

Inboard multiple wet disc

Telehandler TH636C

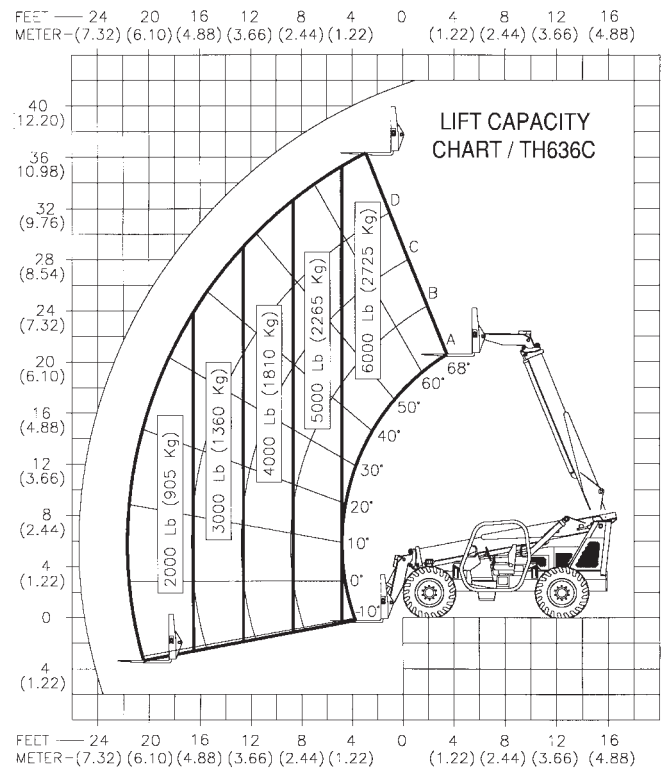
Specifications

Sway Control - Frame Leveling	
Circuit isolated cylinders, 10 degrees either side of center	
Frame Stabilizer	
Twin rear axle lock cylinders	
Hydraulic System	
Pressure compensated hydraulic system	
Variable-displacement axial piston pump	
10 Micron filtration	
Tank Capacities	
Fuel	30 gal (113.6 L)
Hydraulic oil	34 gal (128.7 L)
Tires	
1300 x 24-12 ply, calcium chloride solution filled	
Forks and Attachment Holder Plate	
Length	48" (1,200 mm)
Section	4" x 2" (102 mm x 51 mm)
Operating Cab	
Structure conforms to ISO 8471 (ROPS) and ISO 8449 (FOPS)	
Optional enclosed cab, heater and air conditioning	
Attachments and Fork Options	
Cubing tines	
Pallet forks	60" & 72" (1.52 & 1.83 m)
Rotating fork frames	48", 60", & 72" (1.22, 1.52, & 1.83 m)
45° Swing fork frames	60" & 72" (1.52 & 1.83 m)
Rubbish bucket	1 yd ³ (0.76 m ³)
Variable reach truss boom	
Quick switch attachment	
Auxiliary hydraulic circuit	

Dimensions with Boom Retracted and Down

Overall L x W x H	22' 5" x 8' 6" x 8' 4" (6.83 x 2.59 x 2.54 m)
Wheelbase	10' 4" (3.15 m)
Turning radius (outside tire)	12' 11" (3.94 m)
Ground clearance	1' 5" (.43 m)

Working Ranges and Lift Capacities



Genie Industries, Inc.

18340 NE 76th Street
PO Box 97030
Redmond, WA 98073-9730

TEL 425-881-1800
TOLL FREE 800-536-1800
PARTS & TECH SUPPORT 888-201-6008
FAX 425-883-8475
WEB terex.com
genieindustries.com

For more information, product demonstration, or details on purchase, lease and rental plans, please contact your local TEREX Distributor.

Effective date: October 1, 2005. For further information, please contact your local distributor or the TEREX sales office listed. Product specifications are subject to change without notice or obligation. The photographs and drawings in this brochure are for illustrative purposes only. Refer to the appropriate Operator's Manual for instructions on the proper use of this equipment. Failure to follow the appropriate Operator's Manual when using our equipment or to otherwise act irresponsibly may result in serious injury or death. Prices and specifications subject to change without notice. The only warranty applicable is the standard written warranty applicable to the particular product and sale. TEREX makes no other warranty, expressed or implied. Products and services listed may be trademarks, service marks or trade-names of TEREX Corporation and/or its subsidiaries in the USA and other countries and all rights are reserved. "TEREX" is a Registered Trademark of TEREX Corporation in the USA and many other countries. Copyright ©2005 TEREX Corporation